

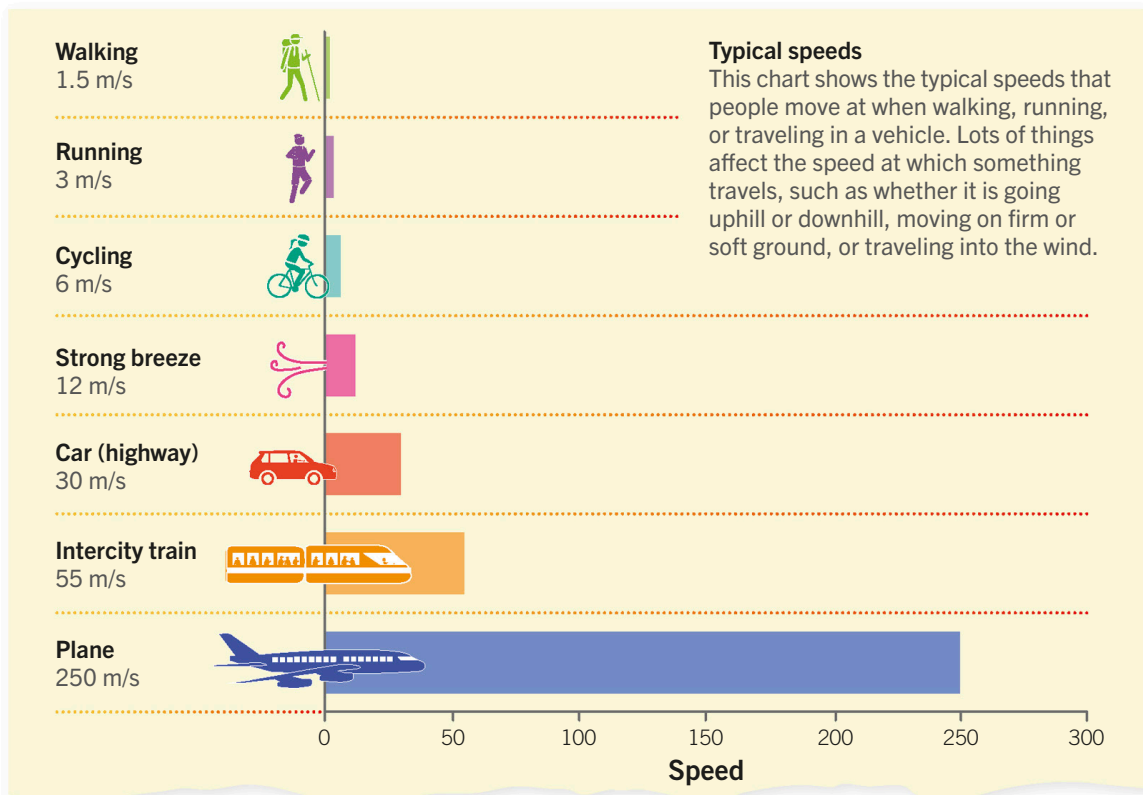
Speed

Speed is a measure of how fast something is moving. It describes distance traveled over a certain amount of time. It is usually measured in meters per second (m/s), miles per hour (mph), or kilometers per hour (km/h). Unlike velocity, which tells you how fast something is moving in a particular direction, speed has no direction—it is a scalar quantity rather than a vector (see page 66).



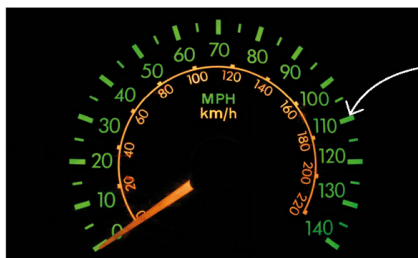
Key facts

- ✓ Speed describes how far something travels in a given amount of time.
- ✓ Speed is a scalar quantity rather than a vector, so it has no direction.



Measuring speed

Scientists usually measure speed in meters per second, but the speedometers in vehicles display speed in other units. Cars use miles per hour or kilometers per hour, and ships and planes usually use knots (nautical miles per hour).



This car speedometer shows speed in both miles per hour (green) and kilometers per hour (orange).